



THE FUTURE OF HEALTHCARE

TODAY'S OVERVIEW

- ▶ The Product
 - ▶ The Business
 - ▶ Details of the Investment Opportunity
-

This presentation includes financial estimates, projected company values and intended company plans. These are based on management's current expectations, beliefs and assumptions about future events. They are subject to a number of risks and uncertainties and actual results may differ substantially. In addition, past performance, to the extent it exists, is no guarantee of future results.

THE FUTURE OF TELEHEALTH

- ▶ In a matter of weeks the world has mutated in a momentous global pivot. There is no going back to the way things were, there is only pivot and move forward.
- ▶ Businesses all over the world are pivoting to the Internet including remote video-clinical-medical services.
- ▶ What PulseOne brings to the medical profession is a remote super intelligent digital lab that no other telemedicine company can offer.
- ▶ PulseOne uses the power of cutting-edge medical research from around the world, plus artificial intelligence in a remote digital platform to provide informational insights that raise the efficacy of prognostics, physician diagnoses and therapies.



Product Overview

April 2022

DEVELOPED BY MEDICAL DOCTORS

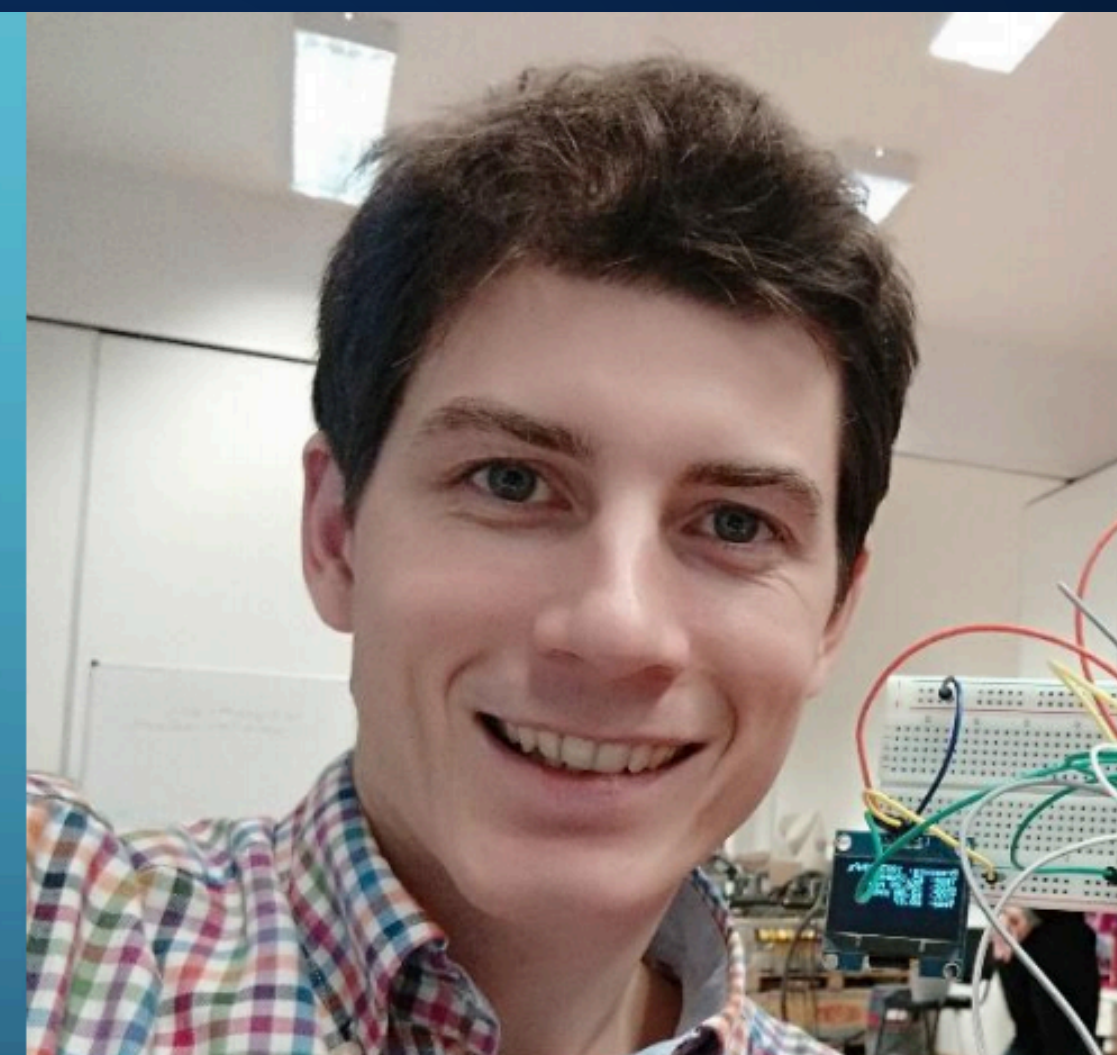
PulseOne is the result of 4 years of R&D backed by 100+ scientific papers.



Sandor Kulin, MD
20 years of non-invasive
monitoring and
diagnostic methods.



Balazs Szabo, EE
20 years of medical
device electrical
engineering.



Daniel Kulin, MD
PhD candidate in digital
health and medical
research in the field of
non-invasive
assessment.



Marcel Visschers,
Strategist
25 years of CEO/
operational GM in
health industries.

DEVELOPED BY MEDICAL DOCTORS & SPECIALISTS

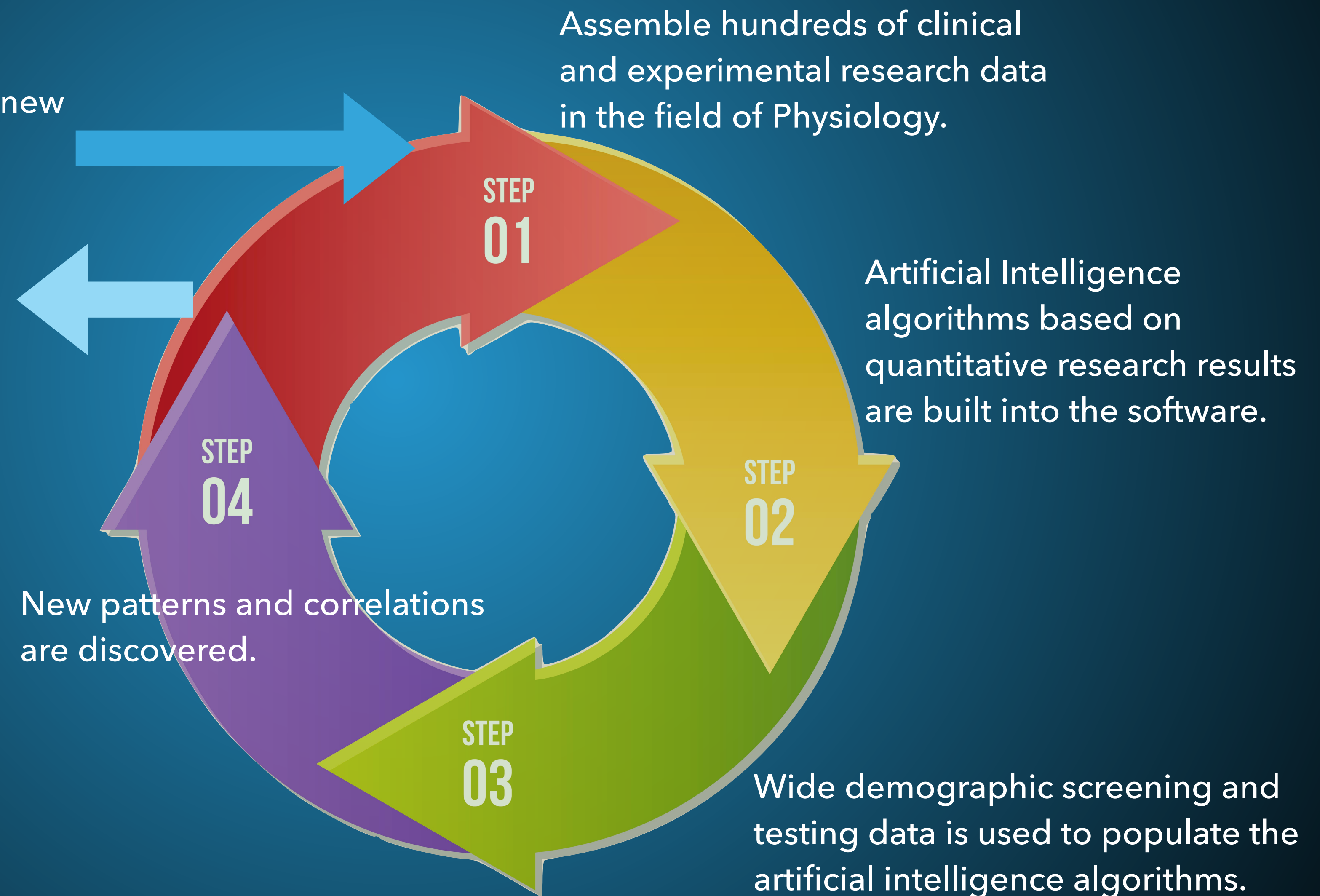
- ▶ PulseOne combines the knowledge of the top medical researchers in the world including: cardiologists, OB-Gyns, GPs treating obesity and diabetes, PhD candidates, electrical engineers and software developers.
- ▶ As our database grows and medical research moves forward, our medical team will discover and implement new parameters correlated to health conditions.
- ▶ No human error - parameters are calculated by the system.
- ▶ There is unlimited application.

HISTORY OF PULSE-ONE

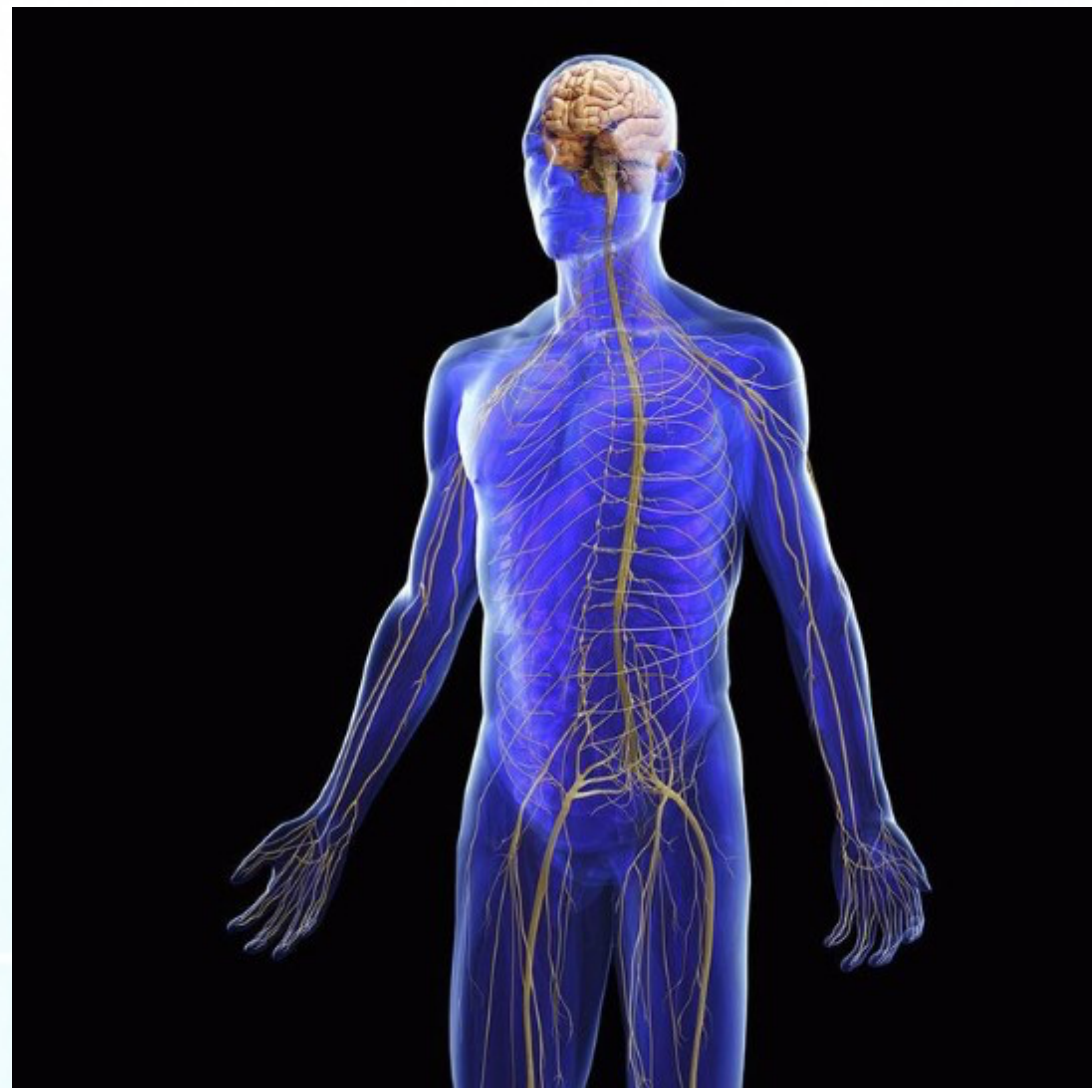
Our goal was to discover and establish new prognostic tools for disease prevention and/or intervention.

Increased patient health with less direct interaction.

Ongoing discovery and establishment of new prognostic tools as medical research evolves.



STATE-OF-THE-ART PRODUCT



Nervous System



Cardiovascular System

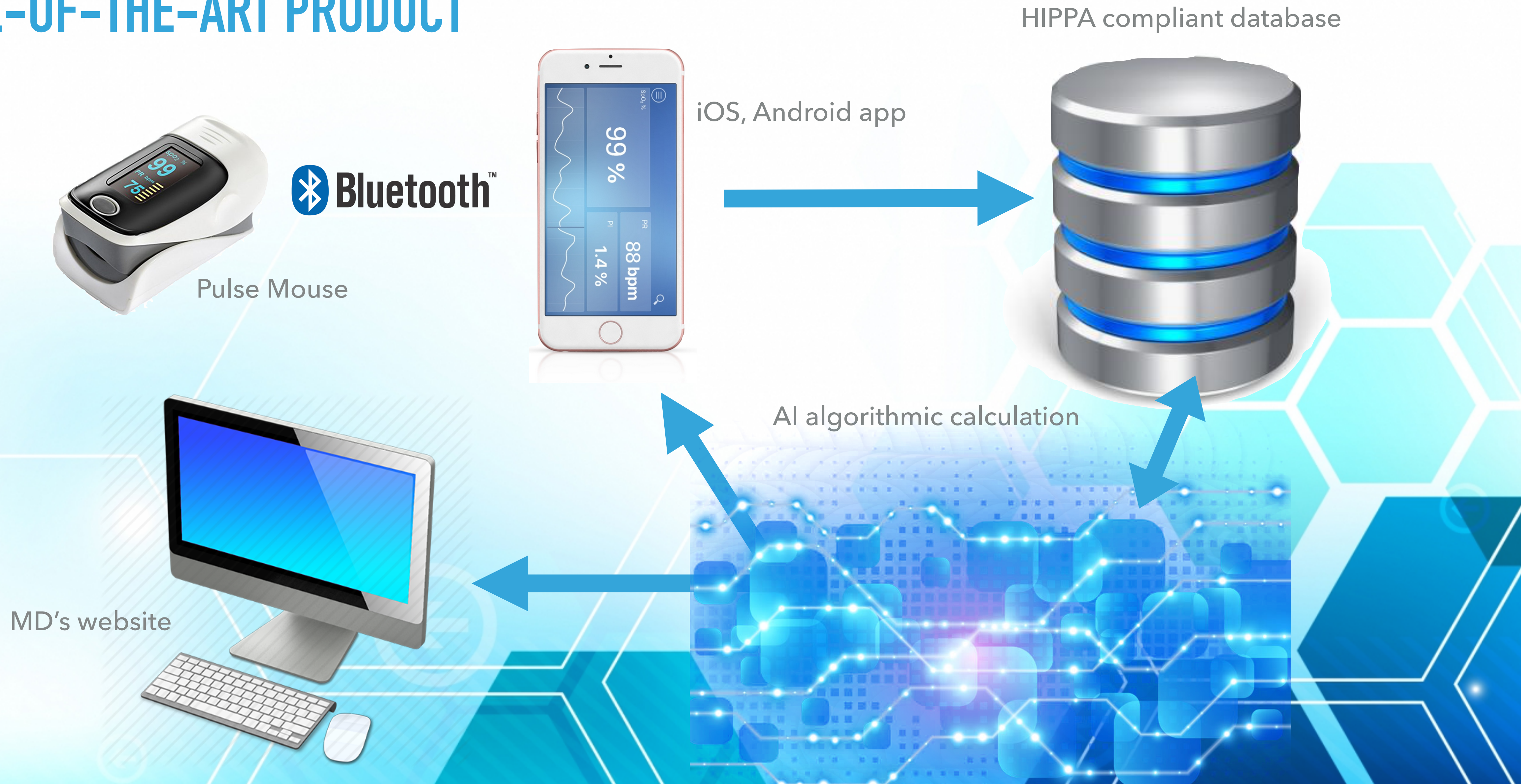


 Bluetooth™

The body is a dynamically changing system of systems which operate between certain ranges. Each heartbeat and its following pulse wave contain important information about these systems. PulseOne provides a long-term view of how the body is operating within or outside healthy ranges.

There are conditions (e.g. stiffening of the arteries, or cardiac failure) that evolve slowly, without overt symptoms in the beginning. PulseOne daily readings can detect early signs of pathology allowing timely prevention, cost savings and better quality of life for patients.

STATE-OF-THE-ART PRODUCT



ALGORITHMIC ANALYSIS: THE DATA ENGINE

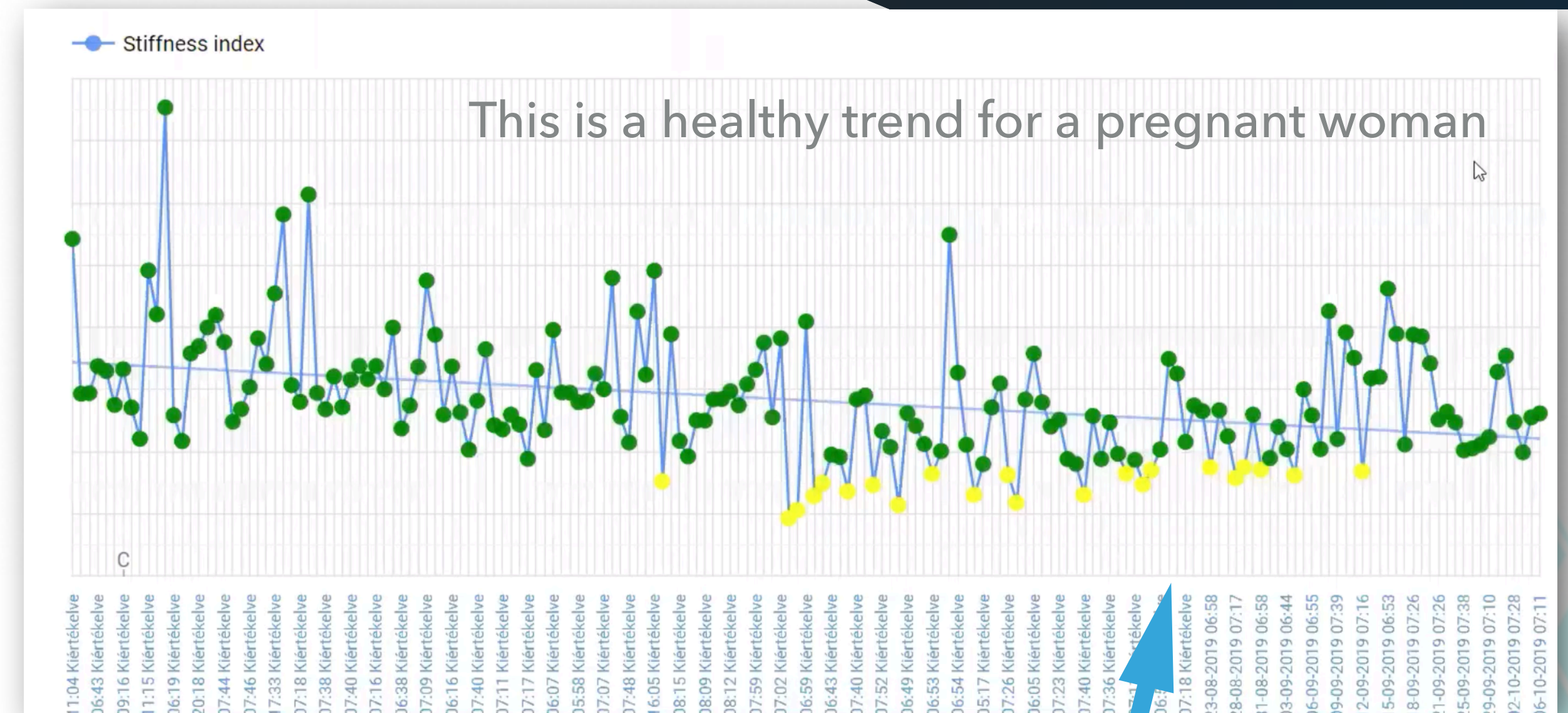
- ▶ Receives data via bluetooth
- ▶ Calculates medical data and corroborative information
- ▶ Visualizes the results
- ▶ Provides automated feedback to the patient
- ▶ Multiple data sets and indicator trends are utilized for diagnosis and prognosis by the health-care practitioner
- ▶ System alerts the health-care provider of negative indicators

PULSE-ONE

Pulse Wave Analysis (PTG) - trend line of Stiffness Index to detect high blood pressure, large artery atherosclerosis, indicating risk of heart attack.

PTG Analysis

Parameter	Measured value	Average	SD	Normal Range	Unit	
Weight ⓘ	88	-	-	60 - 90	kg	<div><div></div></div>
Systolic blood pressure	0	-	-	90 - 130	Hgmm	<div><div></div></div>
Diastolic blood pressure	0	-	-	60 - 85	Hgmm	<div><div></div></div>
SpO2 ⓘ	100	-	-	95 - 100	%	<div><div></div></div>
Mean HR ⓘ	57	-	-	60 - 90	1/min	<div><div></div></div>
Stiffness index ⓘ	8.9	-	-	7.0 - 9.0	m/s	<div><div></div></div>



CLINICAL DATA – PILOT STUDIES

Pregnancy Special Use Case Pilot

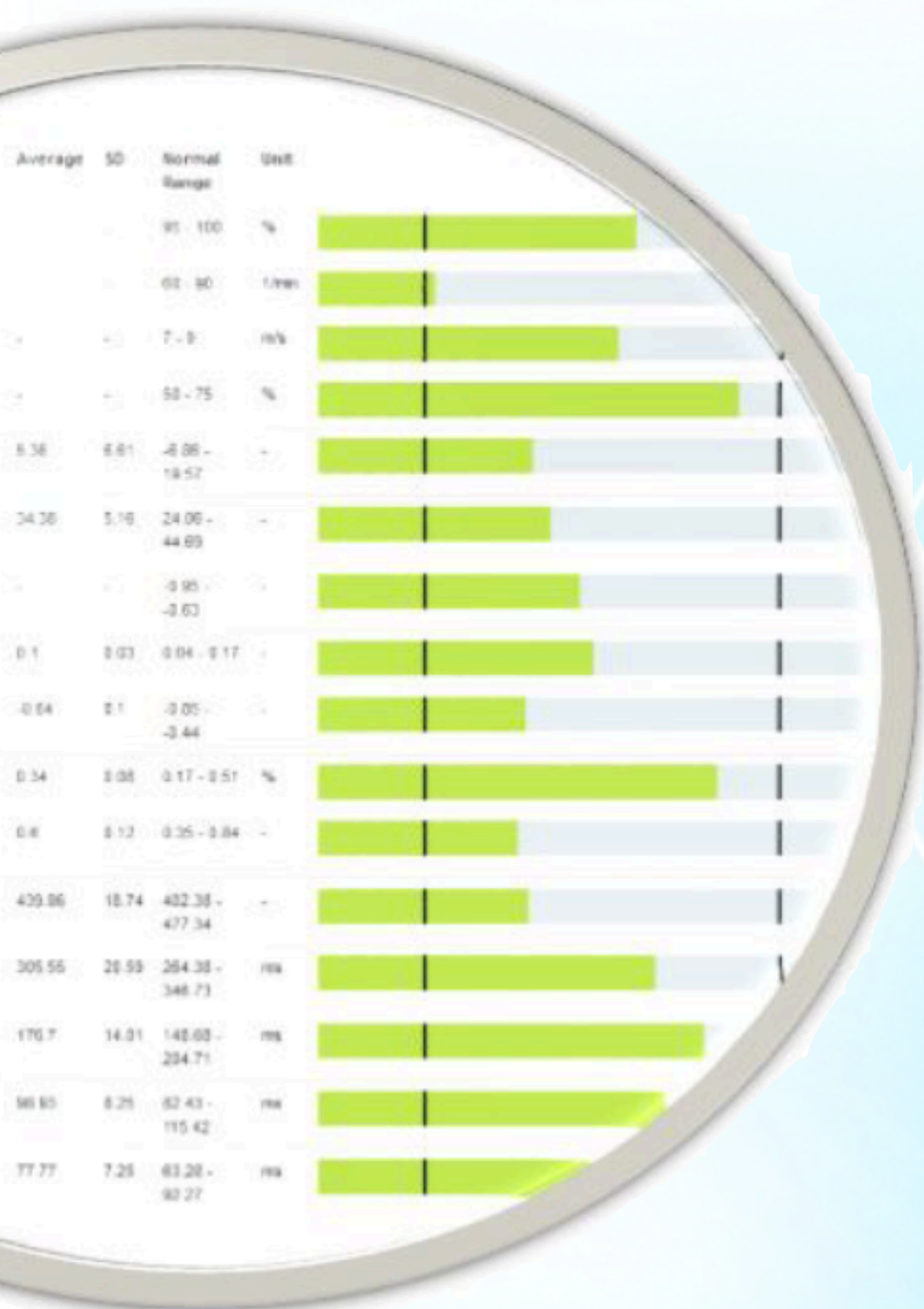
- ▶ The CDC's National Center for Health Statistics (NCHS) reports preterm birth is the number one cause of infant death. The preterm birth rate in the United States worsened for a fourth year, from **9.63 %** in 2015 to **10.02 %** in 2018. No reason for the increase was reported.
- ▶ PulseOne clinical studies show that common and serious pregnancy associated diseases can be detected. Results confirm fewer mid-term complications, preterm births and fewer CEs. There was improvement in all typical complication categories.
- ▶ Results: Healthy moms having healthy babies in a cost effective way.



CLINICAL DATA – PILOT STUDIES

Cardiology & Diabetology Clinic Pilot

- ▶ The CDC's National Center for Health Statistics (NCHS) reports heart disease (**647,457 deaths** annually) is the leading cause of death in the US. Pathologies linked to heart disease are stroke (cerebrovascular diseases) with **146,383 deaths**, and diabetes with **83,564 deaths** annually.
- ▶ PulseOne clinical studies show that anomalies in daily measurement trends can be used as early-warning indicators for starting preventative therapy and implementing life-style changes. Preliminary results indicate a significant reduction in cardiac related disease with an early response to negative indicators.



CLINICAL DATA – PILOT STUDIES

Chronic Care Management Pilot



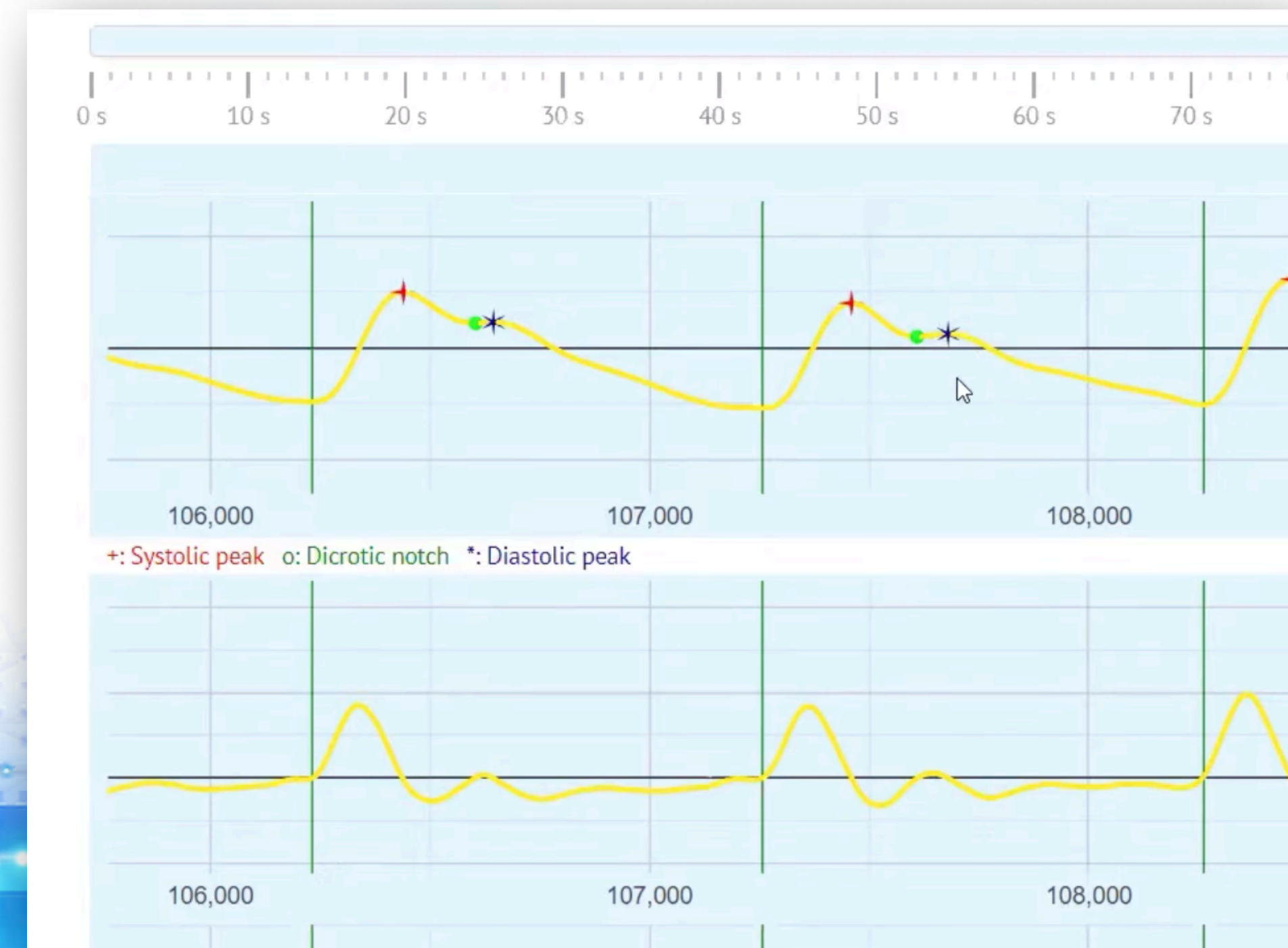
- ▶ National Health Council statistics state incurable and ongoing, chronic diseases affect approximately **133 million** Americans, representing more than 40% of the total population.
- ▶ Due to a growing and aging U.S. population, recent predictions suggest a shortage of physicians (40,800-104,900) by 2030.
- ▶ Clinical studies have shown PulseOne is a highly effective time saving system that assists healthcare practitioners to build health among measured individuals at a reduced cost.

PULSE-ONE

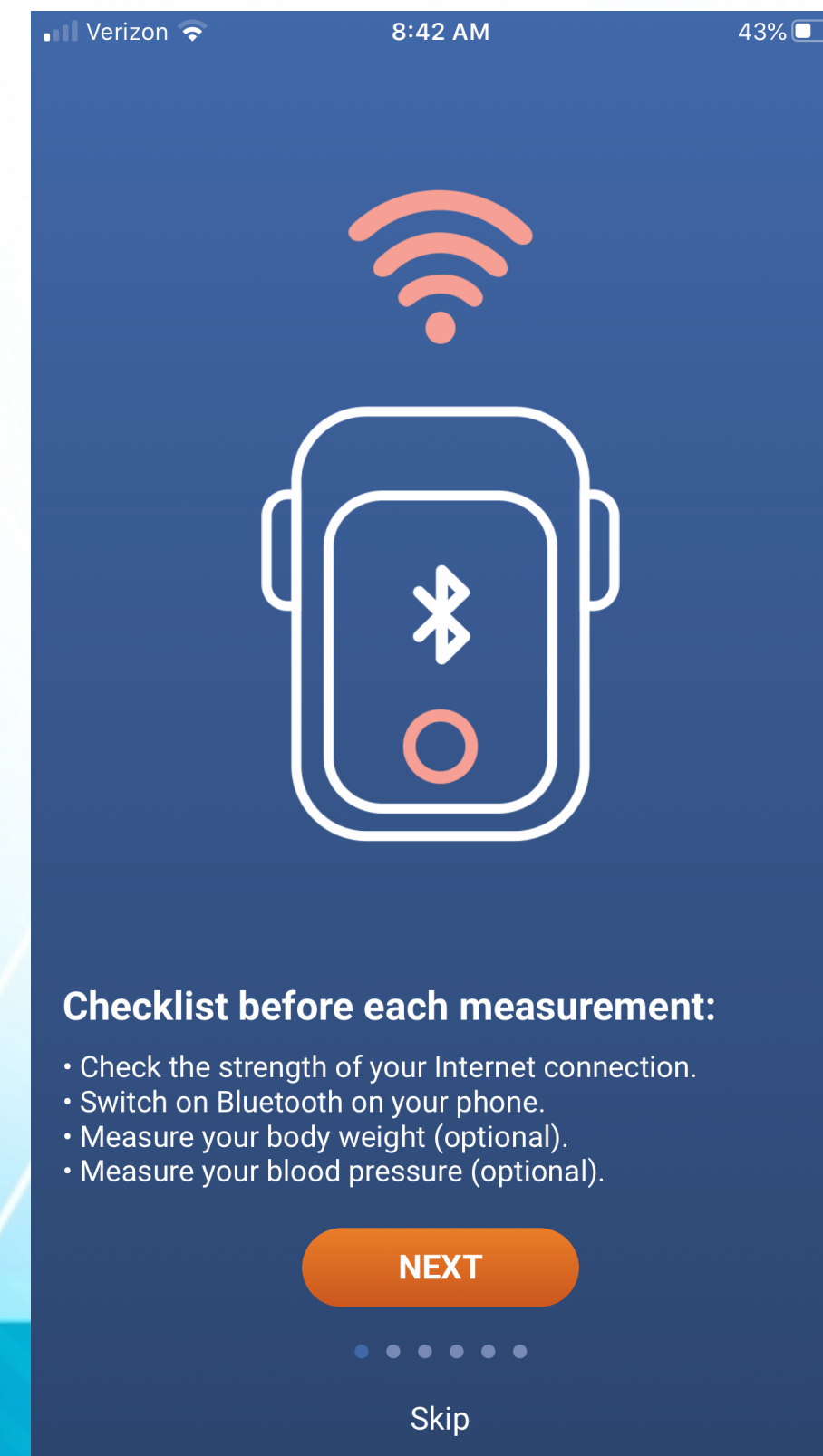
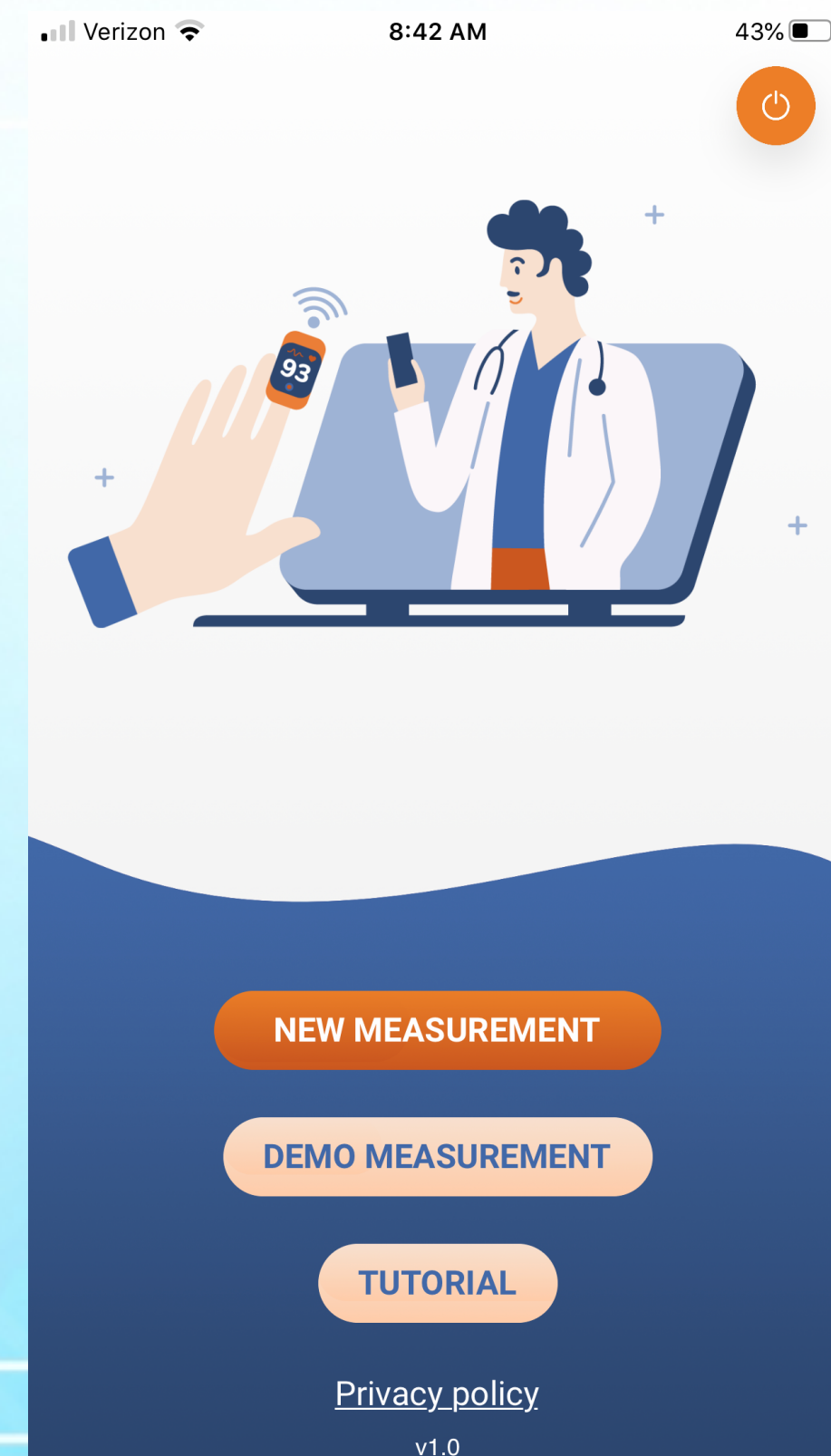
PulseOne has a medical and patient page layout.

The medical version is a fast, easy-to-analyze layout with detailed charts and values.

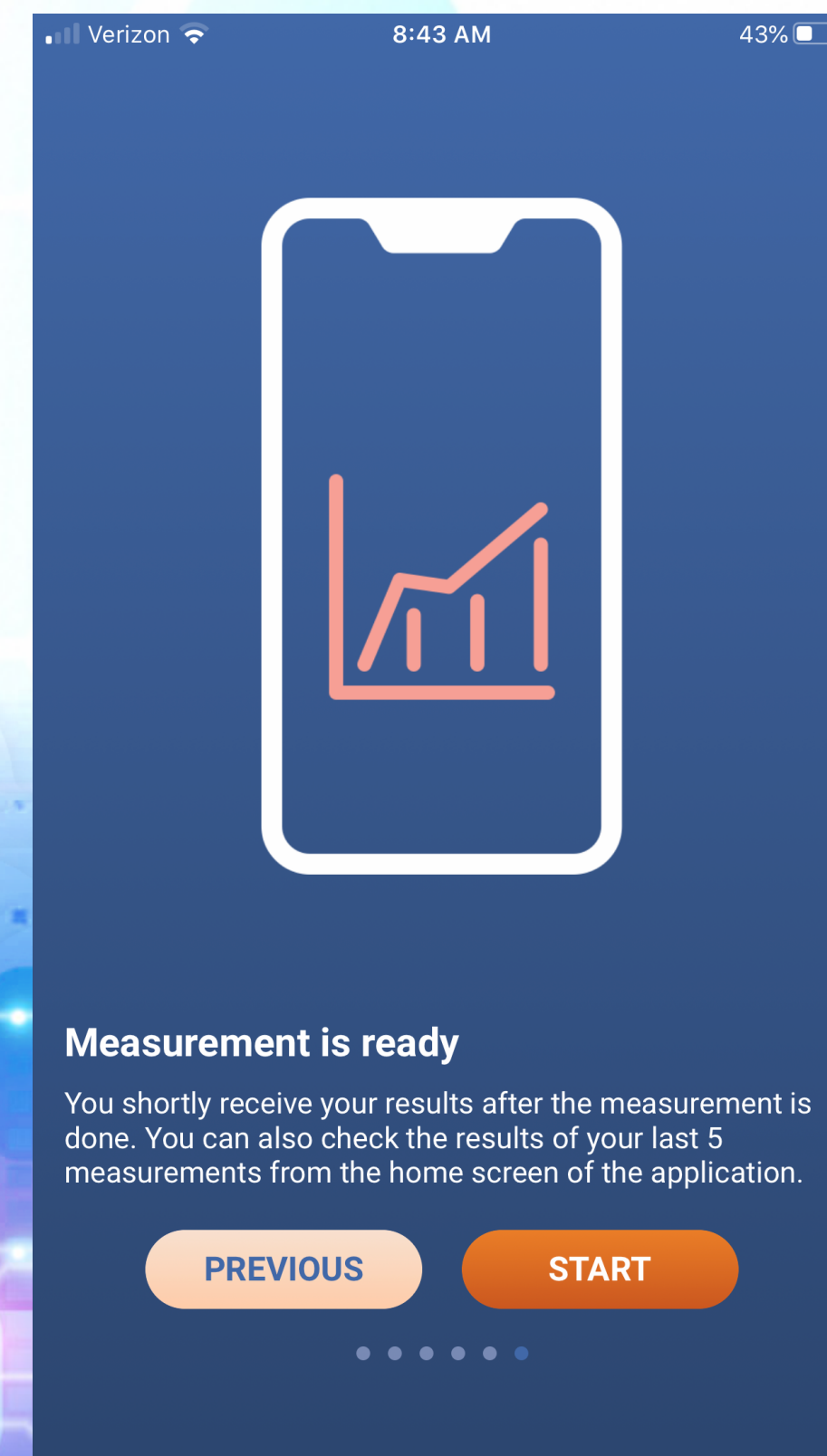
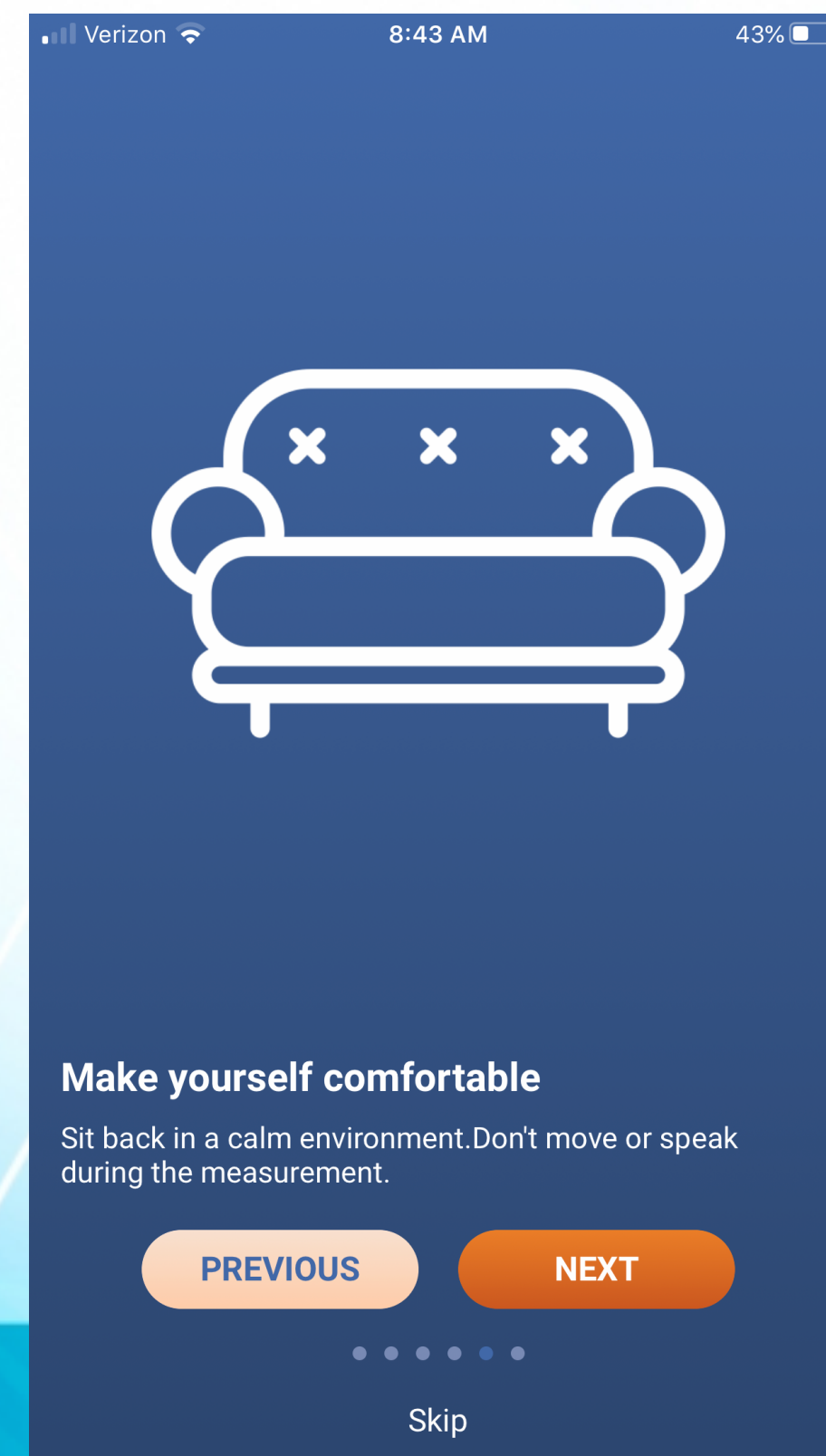
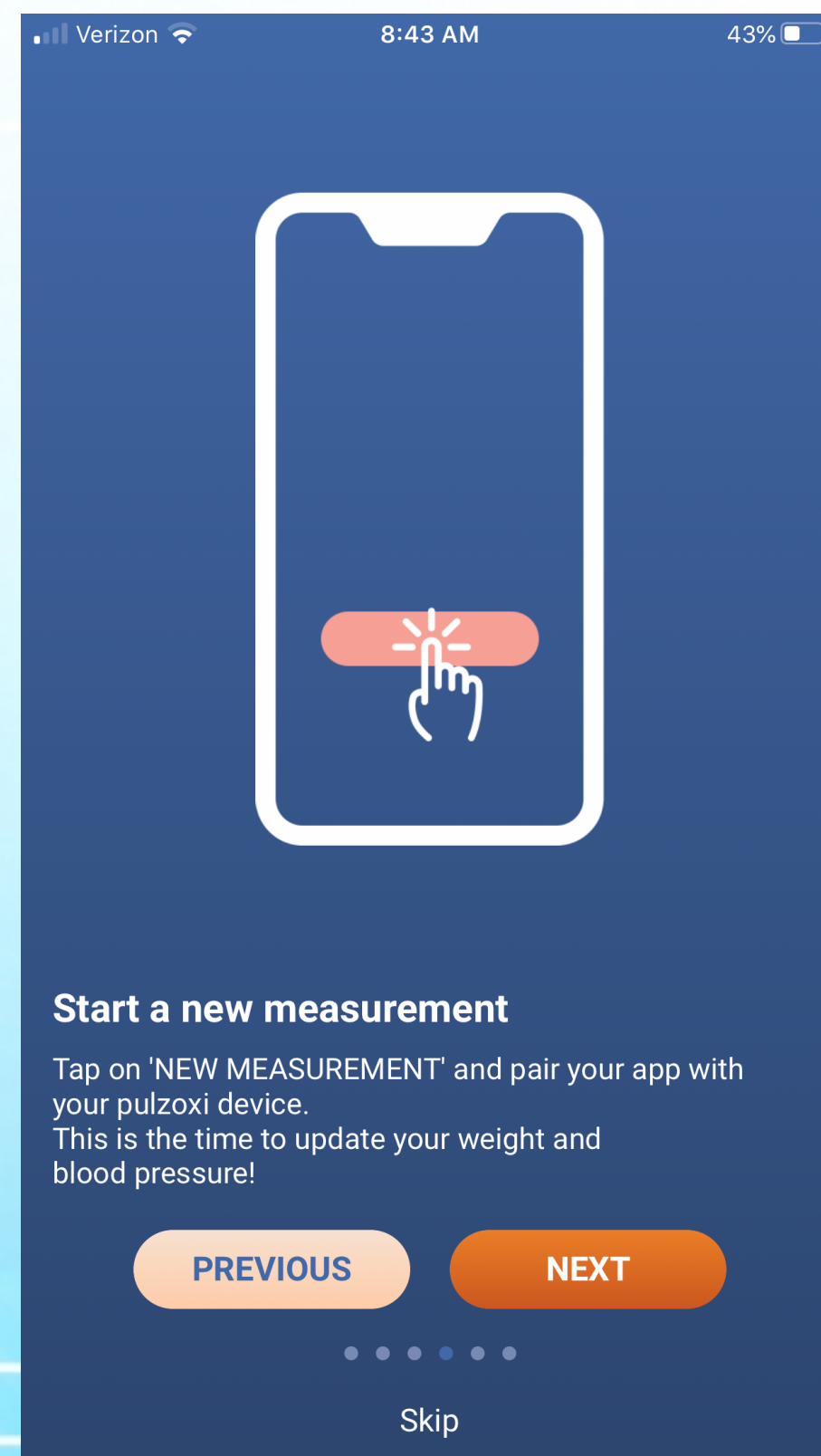
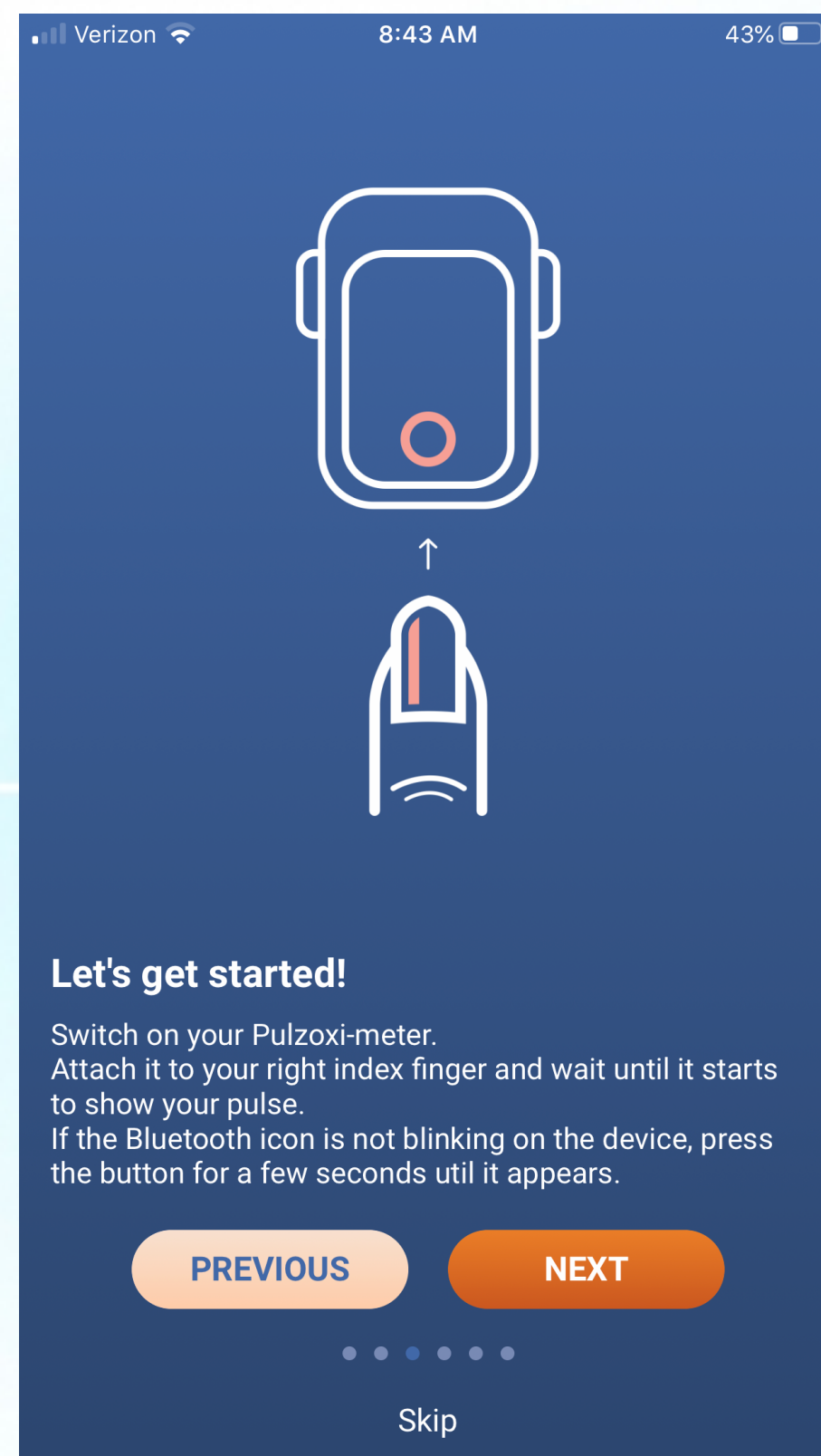
The patient screen layout provides clear information about the current state of health without being too technical.



PULSE-ONE APP



PULSE-ONE APP



REDUCED COST – INCREASED QUALITY OF HEALTH

- ▶ A 2 minute reading provides the electrical data (the electrical language of the body) to calculate 30+ parameters with our patent pending artificial intelligence data engine
- ▶ Catch warning signs when they first appear in the measurements, well in advance of outward symptoms - including COVID 19
- ▶ Catch conditions that don't necessarily show up in one-time test results taken on one day
- ▶ Observe the effect of treatment - fine tune therapy protocols for maximum result

REDUCED COST – INCREASED QUALITY OF HEALTH

- ▶ Track patient health at home - they feel safer
- ▶ Patient can take measurement during a health event at home to provide data to his physician
- ▶ Patient adherence to therapy is better
- ▶ Trust level of the patient increases - they feel someone is watching over them
- ▶ Patient participation raises responsibility for own health

REDUCED COST – INCREASED QUALITY OF HEALTH

- ▶ Call patients when there is an alert - prevents unnecessary office visits
- ▶ Treatment has a greater chance of success
- ▶ Create a new stream of income
- ▶ Train licensed staff to monitor patient statistics
- ▶ Fill office schedule with new patients

BILLING – PULSE-ONE

Fee-for-Service

- ▶ Billing codes in place
 - ▶ New ones are being developed
- ▶ Telemedicine billing codes
 - ▶ Pays \$35-\$85 for non-office consultation
 - ▶ Existing codes, presently reimbursing



SIX KEY ADVANTAGES

- ▶ Early anomaly detection = **better outcomes**
- ▶ Daily physiological measurement = **better data**
- ▶ 30+ parameters + Physician = **better treatment plans**
- ▶ More patient engagement = **less stress = better health**
- ▶ Patient accountability = **better treatment compliance**
- ▶ Better health = **better quality of life and productivity**

BENEFITS

Patients

- Less severe or **no illness**
- Faster **recovery**
- More **communication**
- Fewer **clinic visits**
- Positive **feedback**



Physicians

- High **patient satisfaction**
- Catch **early warning** signs
- Monitor progress + **remote visits** = opens office schedule for new patients
- **Competitive advantage:** opportunity to promote new technology, differentiate practice
- Additional **revenue stream**



Hospitals, Systems, Payers

- **Lower cost**, fewer days in hospital
- **Better outcomes**, fewer re-admissions

ADVISORS



Major General James Comstock, (Ret)

Veracor Management LLC
Co-Owner & Principal

Veracor manages national Opportunity Zone and Community Development Entities (CDEs) bringing economic opportunity and employment to serve the needs of targeted low income communities across the nation.



John Redfearn CFP, ChFC, MRFC, CIC, CLU, CAIP

Veracor Management LLC
Co-Owner & Principal